

**UNI-80503**  
Nikon 1



**Construction**

**Aluminum Casting**  
Less than 5% copper content - Marine Grade 6060 extruded & LM6 Aluminum High Pressure die casting provides excellent mechanical strength, clean detailed product lines and excellent heat dissipation.

**Pre-paint**  
A 5 step degrease and phosphate process that includes descaling and etching as well as a zinc and nickel phosphate process before product painting.

**Memory Retentive - Silicon Casket**  
Provided with special injection molded "fit for purpose" long life high temperature memory retentive silicon gaskets. Maintains the gaskets exact profile and seal over years of use and compression.

**Thermal management**  
LM6 Aluminum is used for its excellent mechanical strength and thermal dissipation properties in low and high ambient temperatures. The superior thermal heat sink design by Ligman used in conjunction with the driver, controls thermal below critical temperature range to ensure maximum lumens flux output, as well as providing long LED service life and ensuring less than 10% lumen depreciation at 50,000 hours.

**Surge Suppression**  
Standard 10kv surge suppressor provided with all fixtures.

**B/C Rating**  
B1 - U0 - G0

**Finishing**  
All Ligman products go through an extensive finishing process that includes testing to improve paint adherence.

**Paint**  
UV Stabilized 4.0MM thick powder coat paint and baked at 200 Deg C. This process ensures that Ligman products can withstand harsh environments. Rated for use in natatoriums.

**Hardware**  
Provided Hardware is Marine grade 316 Stainless steel.

**Anti Seize Screw Holes**  
Tapped holes are infused with a special anti seize compound designed to prevent seizure of threaded connections, due to electrolysis from heat, corrosive atmospheres and moisture.

**Crystal Clear Low Iron Glass Lens**  
Provided with tempered, impact resistant crystal clear low iron glass ensuring no green glass fringe.

**Optics & LED**  
Precision optic design provides exceptional light control and precise distribution of light. LED CRI > 80

**Lumen - Maintenance Life**  
L80 @ 70 at 50,000 hours (This means that at least 90% of the LED still achieve 80% of their original flux)

**Callig-recessed exterior downlights. Modern, clean and powerful downlighting family providing the best resilient under-canopy solutions in the marketplace.**

A compact recessed exterior downlight with a round or square front frame design. Options of stainless steel or powder coated aluminum front frame. The luminaires are designed for use in interior and exterior applications. This fixture is totally waterproof. This means that the fixture can be exposed to the elements from above as well as below.

This luminaire is manufactured with integrated heat sinks that provides exceptional cooling and heat dissipation ensuring long LED life.

Power is provided to the luminaire through a single P69 watertight cable gland and 4ft of Outdoor Submersible #18/3 SOOW 600V power cable. Remote mounted transformer. Includes A80191 driver enclosure box.

All Ligman fixtures can be manufactured using a special pre-treatment and coating process that ensures the fixture can be installed in natatoriums as well as environments with high concentrations of chlorine or salt and still maintain the 5 year warranty. For this natatorium rated process please specify NAT in options. Not suitable for saunas and steamrooms.



**Additional Options (Consult Factory For Pricing)**



**Cylinder 3000K LED 7" Wall Light Textured Black**  
11250BKT30 (Textured Black)



Project Name: \_\_\_\_\_  
Location: \_\_\_\_\_  
Type: \_\_\_\_\_  
Org: \_\_\_\_\_  
Comments: \_\_\_\_\_

**Certifications/Qualifications**  
Class 2: Yes  
Dark Sky Compliant: Yes  
Location Rating: Wet  
Title 24 Compliant: Yes  
[www.kichler.com/west/and](http://www.kichler.com/west/and)

**Dimensions**  
Hood Backplate: 5.00 X 5.00  
Extension: 6.50"  
Weight: 2.80 LBS  
Height from center of Wall mounting (Spec. Shown): 3.25"  
Height: 7.00"  
Width: 5.00"

**Electrical**  
Input Voltage: Dual (120/140V)

**Mounting/Installation**  
Interior/Exterior: Exterior  
Mounting Style: Wall Mount

**Photometrics**  
Color Rendering Index: 90  
Color Temperature Range: 3000  
Delivered Efficiency (lumens/Watt): 33  
Delivered Lumens: 350  
Kelvin Temperature: 3000K

**Primary Lamping**  
Expected Life Span: 45000  
Lamp Included: Integrated  
Light Source: LED  
Max or Nominal Watt: 15W  
# of Bulbs/LED Modules: 1

**Product/Ordering Information**  
SKU: 11250BKT30  
Finish: Black  
Style: Contemporary  
UPC: 783927433066

**Specifications**  
Material: ALUMINUM

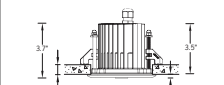
**Additional Finishes**  
● Textured Architectural Bronze  
● Textured Black

Kichler  
7711 East Pleasant Valley Road, Cleveland, Ohio 44131-8010  
Tel: 888.528.5768 | [www.kichler.com](http://www.kichler.com)

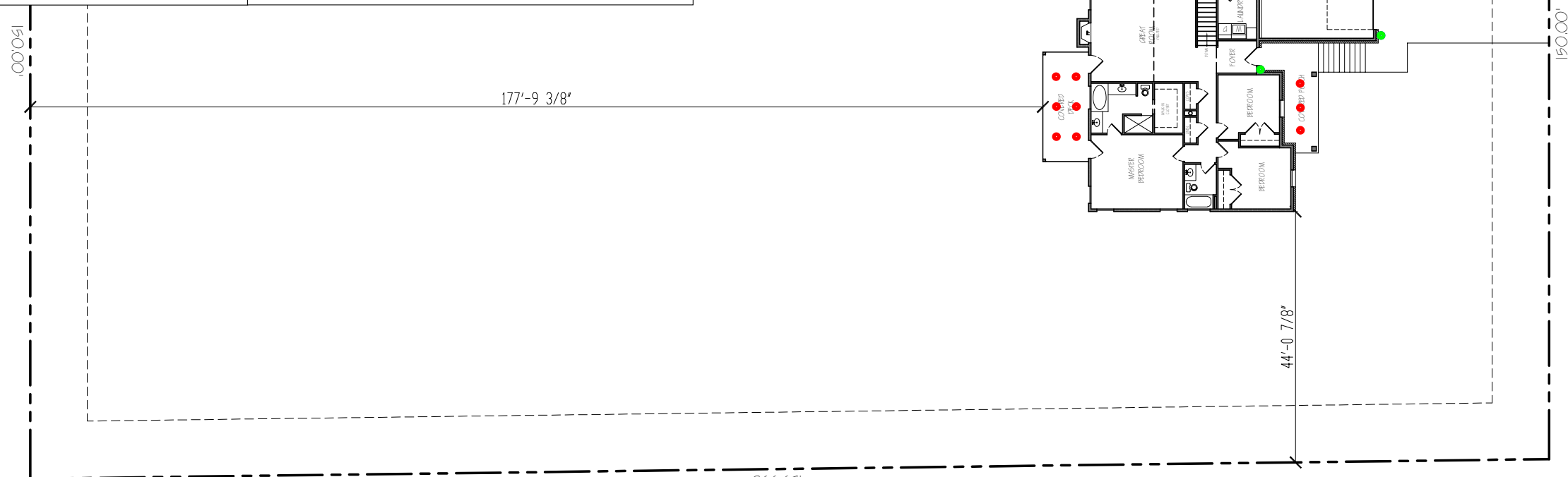
Notes:  
Information provided is subject to change without notice.  
All views are design or typical unless noted otherwise.  
Laboring conditions.  
© Kichler Lighting. The incandescent equivalent as presented is an approximate number and is for reference only.



11w LED 753 Lumens  
IP65 • Suitable For Wet Locations  
IK08 • Impact Resistant (Vandal Resistant)  
Weight 1.1 lbs (A) 1.5 lbs (G)



**Nikon Product Family**



**LINE LEGEND**

	PROPERTY LINES
	EASEMENTS

**Lighting Legend**

Symbol	Qty	Mfg	Model	Comments
●	9	Nikon	UNI-80503	3000K Bulb
●	6	Kichler	11250BKT30	3000K Bulb

SCALE: 1/24"=1'

Example Residential Lighting Site Plan